

# Serie Balcony

## Balcony Series

### Soluzioni in alluminio per balconi e scale.

**Serie Balcony** di **GFS Contract** è un sistema unico nel suo genere, interamente certificato secondo le ultime normative italiane ed europee. **Serie Balcony** propone un prodotto versatile, leggero, sicuro, con una linea estetica moderna e accattivante e, allo stesso tempo, più economico rispetto ad altri prodotti simili. **Serie Balcony** utilizza leghe di alluminio estruso di nuova concezione che garantiscono il raggiungimento degli stessi standard di sicurezza di altri sistemi che pesano mediamente fino al 25% in più e richiede lavorazioni semplici, come tagli e maschiature.

**Serie Balcony** presenta quattro soluzioni con possibilità di attacco a pavimento e frontale, garantendo flessibilità e sicurezza in tutti gli utilizzi.

#### NOTIZIE INFORMATIVE SUI MATERIALI UTILIZZATI - FINITURE

**ALLUMINIO ESTRUSO** - Lega primaria 6060: particolarmente adatta per ossidazione e finiture superficiali. Lega primaria 6063: adatta per particolari sottoposti a sollecitazioni.

**MATERIE PLASTICHE** - Nylon poliammide 6-6/6 rinforzato con fibra di vetro.

**ACCIAIO** - Tutte le minuterie sono in acciaio Inox X5 CrNi 18/10 - A2.

**PRE-TRATTAMENTI** - Sbavatura e levigatura dei pezzi eseguita con coni in ceramica mediante vibratore.

Trattamento non cromico per l'alluminio

**IRIDITE NCP** - per i pezzi soggetti a verniciature.

**FINITURE** - Ossidazione anodica tradizionale ed elettrocoloritura secondo tabelle UNI 7796/97.

Verniciature con polveri poliesteri puro secondo tabelle UNI EN 12206 -1: 2005.

### Aluminum solutions for balconies and stairs.

**Balcony Series** by **GFS Contract** is a unique system, fully certified according to the latest Italian and European standards. **Serie Balcony** offers a versatile, lightweight, safe product with a modern and attractive aesthetic line and at the same time more economical than other similar products.

**Balcony Series** uses the latest extruded aluminum alloys that ensure the same safety standards are achieved as other systems that weigh up to 25 percent more on average and require simple processing such as cutting and tapping.

**Balcony Series** presents four solutions with floor and front mount options, providing flexibility and security in all uses.

#### INFORMATION ABOUT THE MATERIAL USED - FINISHES

**EXTRUDED ALUMINUM** - Primary alloy 6060: especially suitable for oxidation and surface finishing.

Primary alloy 6063: suitable for components undergoing solicitations.

**PLASTICS** - Glass-fiber reinforced nylon polyamide 6-6/6.

**STEEL** - All the small parts are made of X5 CrNi 18/10 - A2 stainless steel.

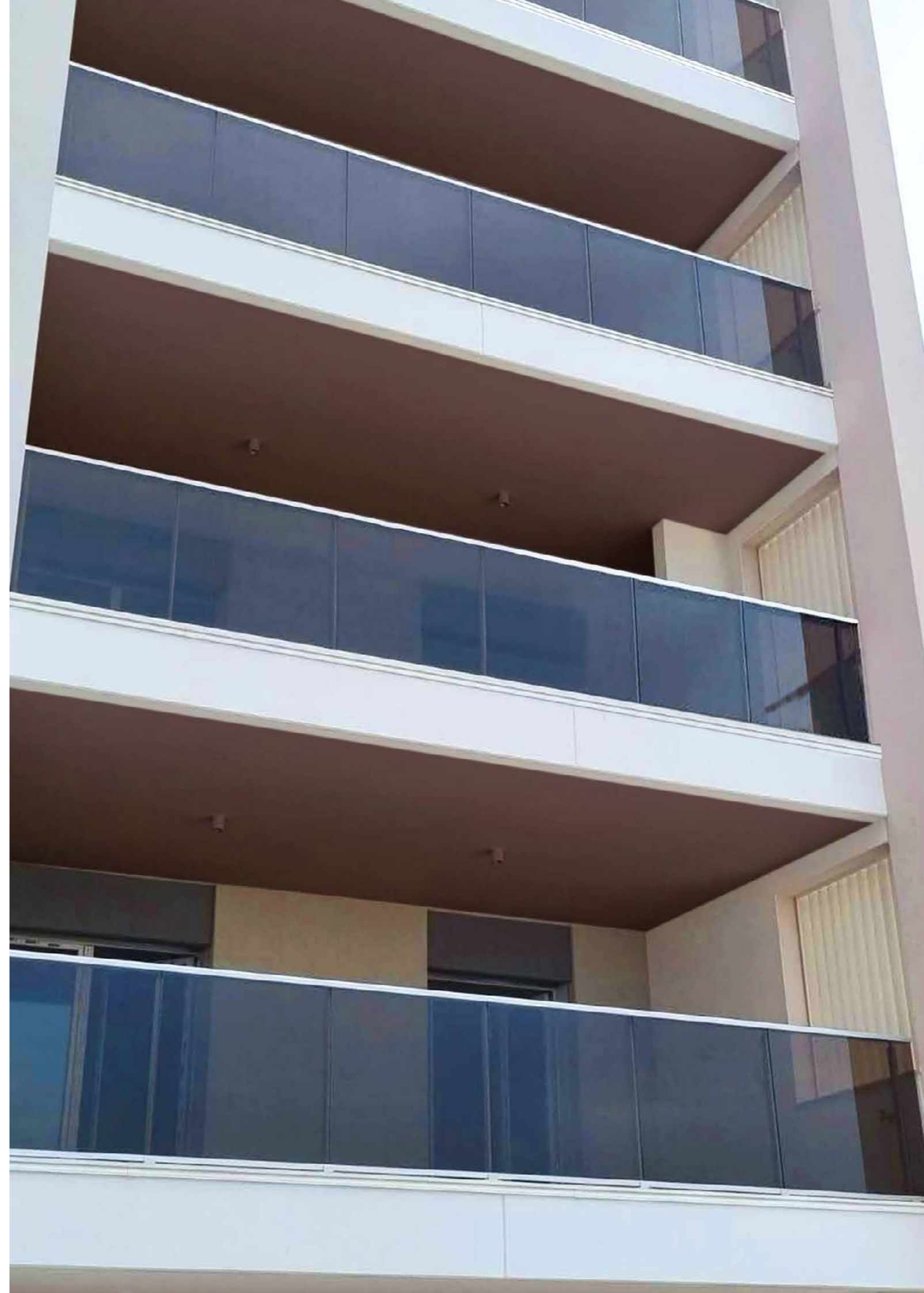
**PRETREATMENTS** - Deburring and sanding of parts performed with ceramic cones by vibrator.

Non-chrome treatment for aluminium

**IRIDITE NCP** for parts subject to varnishing

**FINISHES** - Traditional anodic oxidation and electrocoloring according to UNI 7796/97.

Coatings with pure polyester powders according to UNI EN 12206 -1: 2005

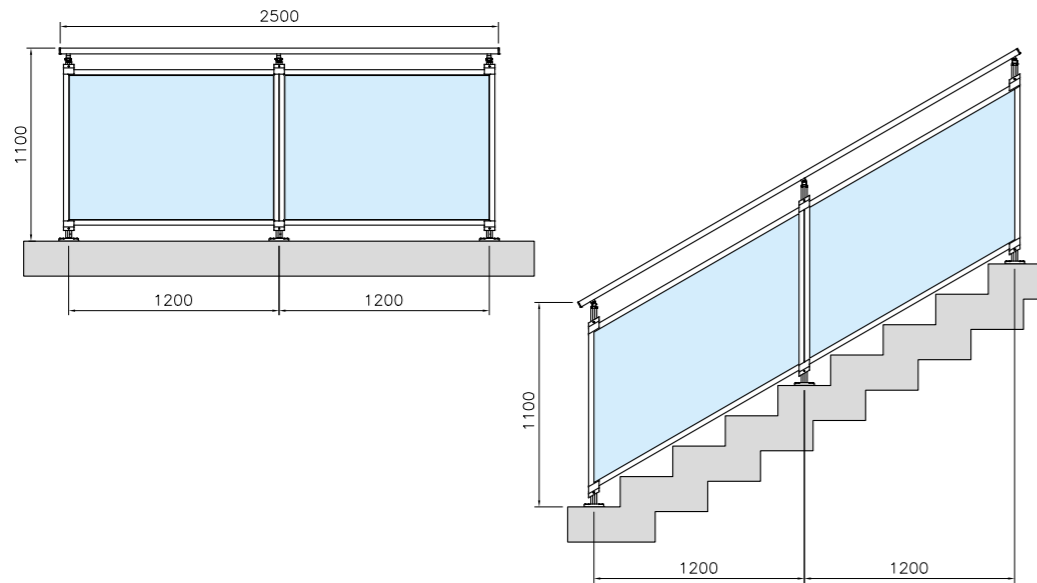


Serie Balcony  
Balcony Series

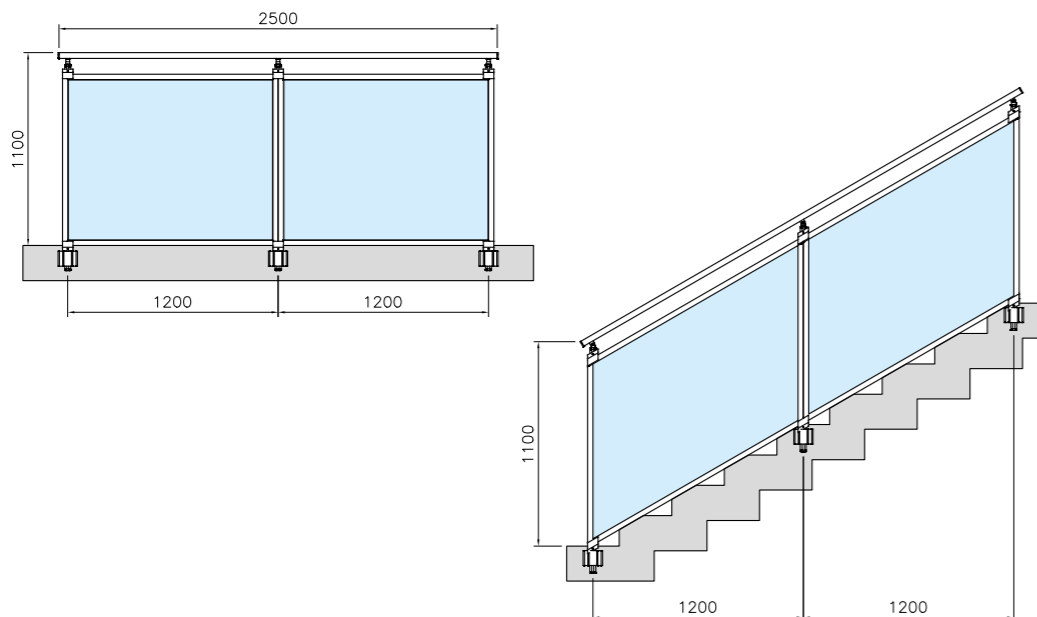
# Balcony Frames



**Attacco a pavimento**  
Floor fixing

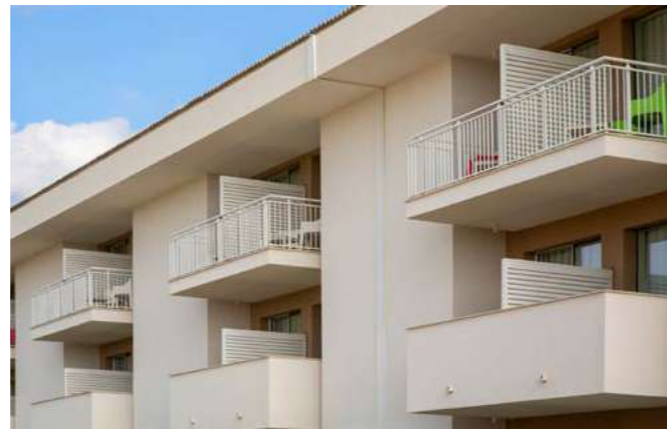


**Attacco frontale**  
frontal fixing



Serie Balcony  
Balcony Series

# Balcony Linear

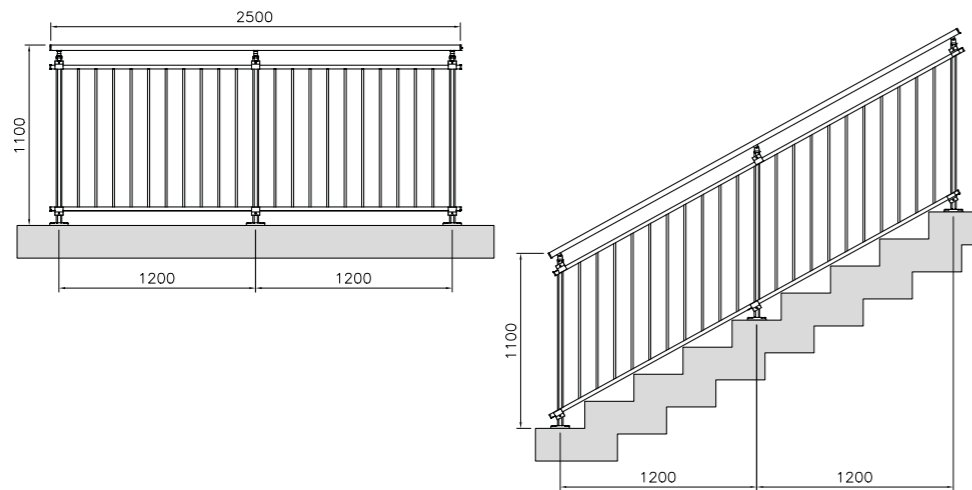


Serie Balcony  
Balcony Series

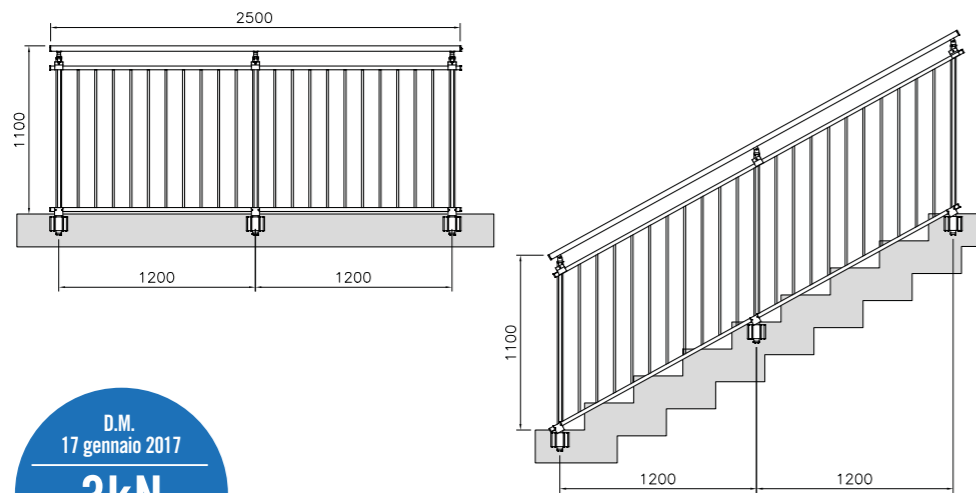
# Balcony Linear



Attacco a pavimento  
Floor fixing

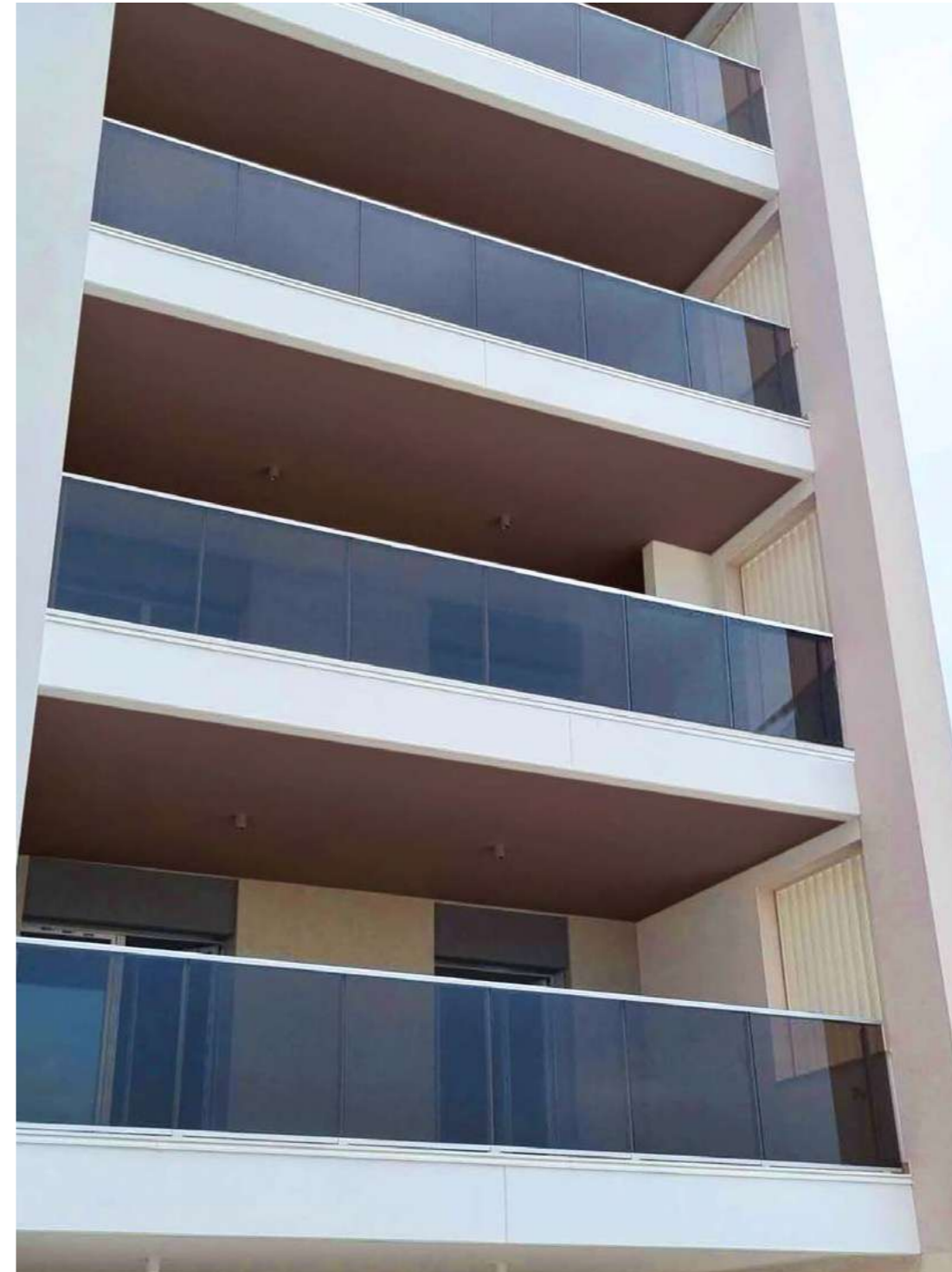


Attacco frontale  
frontal fixing



Serie Balcony  
Balcony Series

# Balcony Square

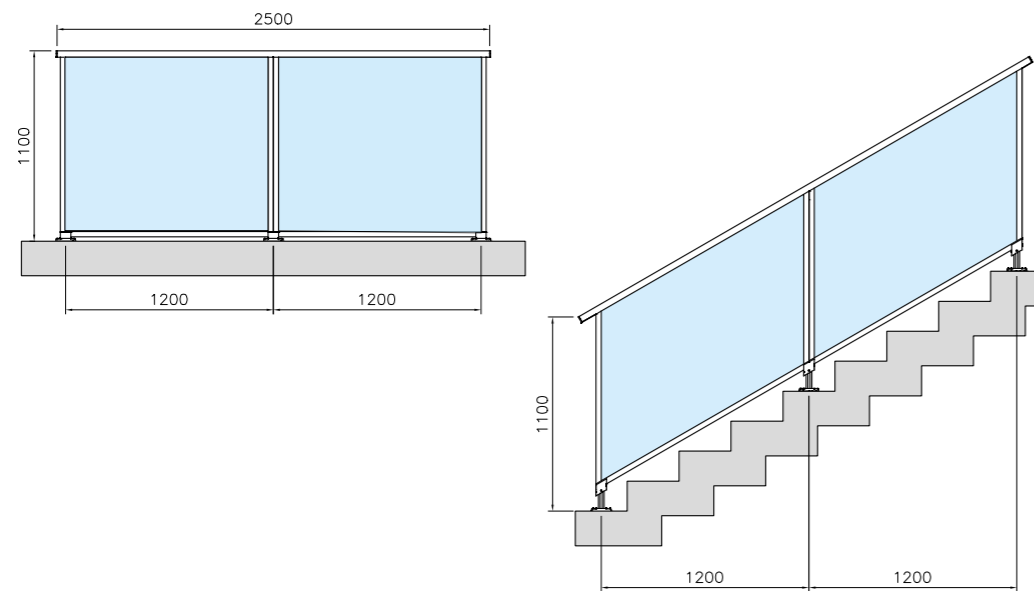


Serie Balcony  
Balcony Series

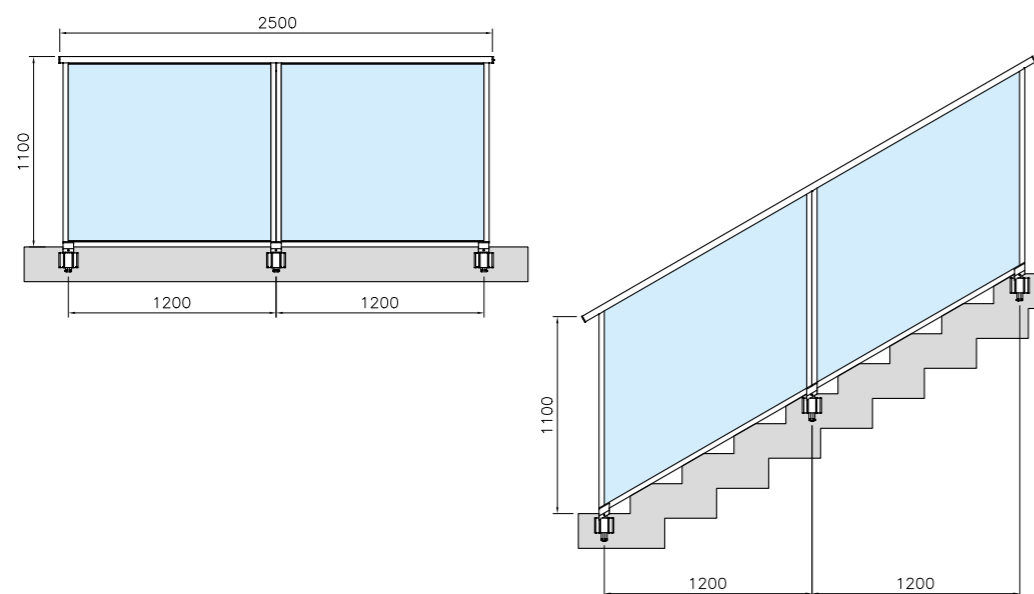
# Balcony Square



**Attacco a pavimento**  
Floor fixing



**Attacco frontale**  
frontal fixing



Serie Balcony  
Balcony Series  
See Glass

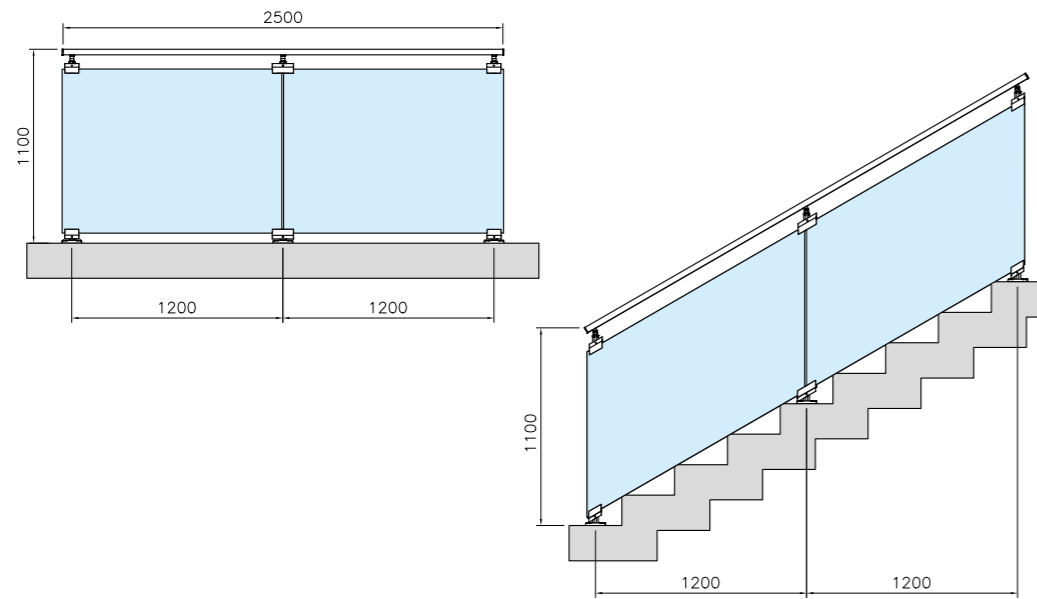


Serie Balcony  
Balcony Series

# See Glass



**Attacco a pavimento**  
Floor fixing



**Attacco frontale**  
frontal fixing

